



Global Health Clinical Scholars Program

Complex Humanitarian Emergency Simulation Exercise

May 9-10, 2009

Anthony Chabot Campground, Oakland, California

Based on real events in Chad/Sudan

HUMANITARIAN RESPONSE

SECURITY PLAN

LEADERSHIP

CRISIS RESPONSE

EVACUATION

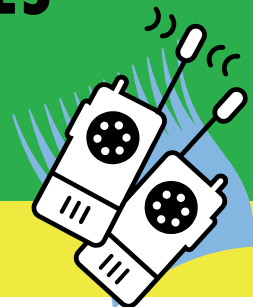
TEAM WORK

MILITARY CHECKPOINTS

REFUGEES

HEALTH DELIVERY PLAN

WHAT WILL YOU DO?



Directions to the simulation ANTHONY CHABOT REGIONAL PARK: Lookout Ridge Campground
CARPOOLING: Essential because only a small number of cars will be allowed to stay in the park overnight. We will coordinate carpooling amongst trainees a week prior to the exercise.

If driving, the best approach is:

From eastbound I-580 in Castro Valley, take the Redwood Road exit.
Turn left (north) on Redwood Road.
Go 5.5 miles to the Marciel Gate (9999 Redwood Road) sign (on the left).
Turn left onto Marciel Road. From here it is 2 miles to the group campground.
First you will pass the turnoff to the marksmanship range. Continue on down the hill to the group campground turnoff on the right. Entry is restricted by a locked gate. Based on prior arrangement, someone will be there to let you in.
Lookout Ridge campground is HQ for the simulation. It is at the end of the road overlooking the Lake Chabot.

Park Contact Information:

Cell phone reception is limited in the park.
Campground Office (located down the road from the group site): 510.639.4751
Park Police (evenings and weekends): 510.881.1833

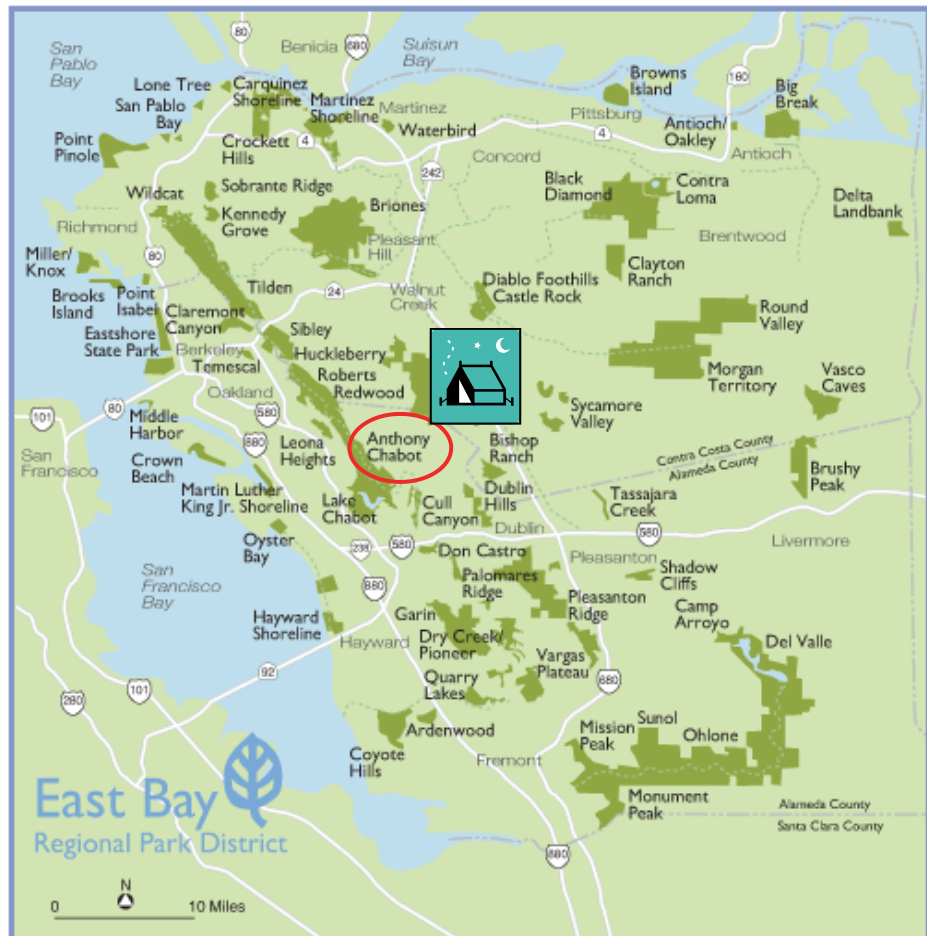
What to bring



- ◆ Roleplay materials
- ◆ Warm clothes
- ◆ Raingear
- ◆ Comfortable shoes
- ◆ Water bottle
- ◆ Travel coffee mug
- ◆ Notebook & pen
- ◆ Flashlight
- ◆ Snacks
- ◆ Sunscreen
- ◆ Hat
- ◆ Insect repellent

If staying overnight, add:

- ◆ Tent
- ◆ Pillow
- ◆ Blanket
- ◆ Sleeping bag, pad
- ◆ Necessary medications
- ◆ Personal toiletries
- ◆ Small hand towel



If you have questions, please email Vaishali Patel at patelvs@globalhealth.ucsf.edu